

# Crunch Oil<sup>®</sup>

HYDROCARBON ABSORBENTS



**NEGOCIOS GLOBALES SA**  
9 de Julio N° 1189 Floor 1 Of. N° 9 - Mendoza, Argentina  
Tel: 00 54 261 4230482

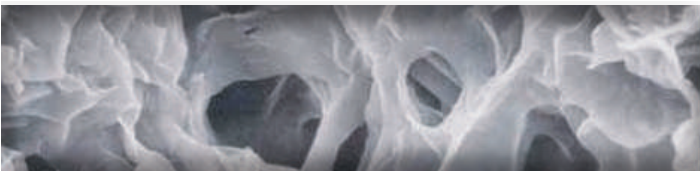
# ANTI SPILL TRAY

The ANTI-SPILL TRAY is a kit consisting of a canvas tray and polypropylene sleeves filled with Loose Fiber absorbent. It is portable, compact and with fast assembly for containment and absorption of spills of hydrocarbons, allowing an effective control of the hydrocarbons.

Ideal to be used in maintenance of all types of machinery in the field (mining industry, oil, airport, agriculture and industry in general), it is designed to retain all types of fluids due to overfilling or leaking of industrial machines, mechanical equipment, industrial vehicles, and similar devices.

Its main function is to prevent these substances from causing a spill to soil, avoiding serious environmental contamination.

The equipment has a set of CRUNCH OIL absorbents that uses Loose Fiber as a base to guarantee the efficiency of the operations where, depending on the product, absorption ranges greater than 5 times the volume of fiber contained in each product can be achieved.



The absorbed product is encapsulated thanks to the particular structure of the fiber.



## PHYSICAL AND CHEMICAL PROPERTIES

- Physical appearance: greenish-blue fiber.
- Specific weight: 0.20-0.22
- Humidity: 5.5%.
- Residue by ignition: 4% ash.
- Inert materials: 0.5%.
- PH: 7 (Neutral)
- Flash Point: 280 - 290 ° C
- Absorption capacity: 5 to 8 times its own weight (depending on the characteristics of the absorbed substance)

## ADVANTAGES

- Great absorption capacity and performance.
- Highly hydrophobic (repels water).
- Fireproof: it only carbonizes from 280°C, and it does not generate a flame.
- Due to its encapsulation capacity, it does not leach, avoiding indirect contamination.
- 100% biodegradable and natural.
- Ecological and friendly to the environment.
- Dries clean, without the need to use water.
- Non-toxic in its original form (non-polluting fibers).
- Easy-use, easy-application and high-absorption speed.
- There is no expiration date, but it is recommended to use the product within 3 years from the packing date.

## LIMITATIONS

In the presence of strong acids or alkalis, although it maintains its absorption capacity, it must be removed quickly, since it can be chemically attacked. As it is an organic material, it is necessary to carry out a compatibility test for its use. See the list of substances already tested.

## STORAGE

It is advisable to store it in dry places, keeping the containers closed and preferably placed on pallets.

# ANTI SPILL TRAY

- Test of biodegradability and non-toxicity: DETI Laboratory, National University of Cuyo, Argentina
- Acute toxicity bioassay and efficiency test: Faculty of Marine Sciences, University of Valparaíso, Chile
- Certificate of authorization of use: DIRECTEMAR, Chile Navy
- Certificate of authorization of use: SEREMI Chile.
- Leaching test of hydrocarbons: Water Laboratory, National Technological University, Mendoza, Argentina
- Leaching test for hydrocarbons: DETI Laboratory, National University of Cuyo, Argentina
- Certificate of natural origin, CONICET, University of Comahue, Argentina

## CERTIFICATIONS



HEALTH	0
FLAMMABLE	0
PHYSICAL DANGER	0
PERSONAL PROTECTION: Safety glasses Gloves Apron Powder respirator	F

- Type of risk caused by accidental exposure to material (Health): 0 (values range from 0 to 4)
- Flammability: 0 (values range from 0 to 4)
- Physical hazard associated with the material, reactivity (Physical hazard): 0 (values range from 0 to 4)
- Personal protective equipment: CATEGORY F (safety glasses, gloves, jump-suit and respirator against dust)

## Classification HMSI NFPA 74



## SECURITY RHOMBUS

Once contaminated, the product can be sent to final disposal through incineration or landfills according to the current legislation of each site.

## FINAL DISPOSAL



# ANTI SPILL TRAY

<b>Code</b>	<b>Product</b> (Container Measurements)	<b>Content</b>	<b>Weight</b> (approx.)
110755	K120/40 (120 l containment, 40 l absorption)	1 canvas tray (150 cm x 80 cm x 10 cm), 2 150 cm long sleeves x 10 cm diameter and 2 80 cm long sleeves x 10 cm diameter.	10 kg
	K200/60 (200 l containment, 60 l absorption)	1 canvas tray (200 cm x 200 cm x 10 cm), 4 250 cm long sleeves x 10cm diameter.	17 kg
	K300/80 (300 l containment, 80 l absorption)	1 canvas tray (250 cm x 250 cm x 10 cm) 4 250 cm long sleeves x 10 cm diameter.	21 kg
	K400/90 (400 l containment, 90 l absorption)	1 canvas tray (300 cm x 250 cm x 10 cm) 2 300 cm long sleeves x 10 cm diameter and 2 250 cm long sleeves x 10 cm diameter.	25 kg
	K1000/140 (1000 l containment, 140 l absorption)	1 canvas tray (500 cm x 400 cm x 10 cm), 4 250 cm long sleeves x 10 cm diameter and 4 200 cm long sleeves x 10 cm diameter.	43 kg
	K3000/290 (3000 l containment, 290 l absorption)	1 canvas tray (1400 cm x 450 cm x 10 cm), 10 250 cm long sleeves x 10 cm diameter and 6 200 cm long sleeves x 10 cm diameter	120 kg

